



EPWELL ECHO

June July 2025 | Issue 235



SMITHS NEWSAGENTS

Did you know we deliver daily newspapers in your area?

Enjoy the convenience of a paper delivered through your door every morning.
Choose as many or as few newspapers each week to suit you.



Call us on: **01295 268 499** or email: **info@smithsnewsagents.co.uk**

RIDGE & FURROW
LAVENDER

NEW GIFT SETS AVAILABLE

ORDER ONLINE AT OUR WEB SITE SHOP OR DROP BY
<https://ridge-and-furrow-lavender.sumupstore.com/>



GIFT BOX £35



GIFT PACK £26



GIFT BASKET £150

GREAT TO SEE SO MANY AT THE EGG MEETING
10% OFF FOR JUN - CODE = ECHOJUN25

CHECK OUT THE WEB SITE & WE WILL DELIVER TO YOU OR YOU CAN POP TO NAIN HILL HOUSE TO COLLECT



Editors' letter

We have been so lucky with the weather over the past two months, if you like being outside, enjoying the warmth and lapping up the rays. However for us keen gardeners (and no doubt our farming community) it has been a real challenge with the ground cracking up and parched plants, but as usual we rise to the challenge!

All the more so to prepare for our event on Saturday 14th June, when members of the Epwell Garden Group ('EGG') who wish to will be leaving Christian's garden in the afternoon and heading off round the village visiting all the EGG members gardens (only those who would like to show off their beautiful gardens!) and then to finish in Marie's garden for a picnic. Here we shall all bring our own picnics and have our monthly meeting in her garden. Don't forget if you would like to be part of our EGG then contact Christian and become a member. clejeune069@btinternet.com

There have been many events in the village over the past two months, thanks to so many willing volunteers amongst us, and we hope we have managed to remember most of them. A splendid Vintage Afternoon Tea took place at the village hall on 18th May (pictures are featured on page 11); and a lovely evening took place after the Parish Council Meeting with drinks and nibbles. We have also benefited from the ERA initiative to encourage the village to build bird nest boxes for the playing field. Finally a moving celebratory service for the 80th anniversary of VE day took place at St. Anne's Church on the 11th May.

We have a winner of the Honey Quiz (page 15). It is Julie Bruggenwirth with the amazing result of 124 valid words! Hopefully she will enjoy her pot of Epwell Honey!

The front cover on this edition is a drawing of Marie outside her house, Bricklewood, by her great grandson Dylan Rogers, age 7 Thank you Dylan for a really lovely drawing! Don't forget that you too could have your drawing or photo on the front cover; never too young or indeed too old to share your creativity.

As usual please submit any articles you would like to be included in the next edition of the Epwell Echo to epwellecho@gmail.com, and thank you for your support!

P.S : Please do support the National Garden Scheme's Open Garden's weekend in Sibford Ferris and Gower on Sunday 22nd June. Combined admission charge is £7 and all proceeds go to various charities.

Epwell Parish Council Meeting – 15th May 2025

These are notes only. For full details, please see EPC board and village website.

No members of the public were present.

Elections: Mathew Platt was re-elected as Chair and Peter Gibson as Vice-chair.

Fallen down barn at Manor Farm: At the date of the meeting, the owner of the barn was in contact with a structural engineer in order to get an assessment of the barn. There had been concern about fuel deliveries in the village, but these have been resolved. There was no further information, but there is progress.

Highways: Broadlands Turn to Shutford road has been resurfaced. It is not that smooth, but there are no potholes!

EPC will continue to report blocked drains in the village which were supposed to be cleared a year ago.

Defibrillator: EPC has purchased the first of two defib machines, for each side of the village. Siting to be discussed.

ERA – playing field: ERA has been quoted a minimum of £6,000.00 to fix/replace the zip wire. They are currently exploring options for grants. The equipment is all in need of repair/replacement and there will be a separate meeting to discuss this

Planning: 1 The Close, loft alteration and replacement garage, supported by EPC.
The Forge, Birds Lane, reconfiguring existing lean-to conservatory, supported by EPC.

PROVISIONAL DATES FOR FUTURE MEETINGS: July 14th, September 8th, November 10th – all Mondays.

FORTHCOMING EVENT.

Saturday 21st June, Summer Solstice at the Pavillion in the Field.

From 12 noon. Bring a picnic. Enjoy some games. BBQ from 4pm onwards.

BBQ food donated by EPC. Bar – proceeds to ERA.

Everyone welcome!

Epwell Village Hall News.

At last, the sun is shining, which means that tables can be put outside at events.

Our Bacon Butty Breakfast was very well attended. Well, who does not like a bacon roll? Along with people from Epwell, we had the Banbury Star Cyclists who included us on their route; they are always very hungry! There will be another Butty Breakfast on Saturday 14th June – see below for details.

We were so lucky with the weather for the Traditional English Tea on Sunday 18th May. It was the first time we had done something like this and we would like to thank everyone who booked a tea. The sun shone, the tables were laid with a lovely collection of vintage plates and teacups, pretty tablecloths and napkins and the food was served on traditional cake stands. Scones, cakes and sandwiches were the order of the day, along with pots of tea or cafetieres of coffee. The photos show everyone having a good time and the feedback was very positive. An event to be repeated!

And finally, the patio. Work has started on this; we have been able to re-use a lot of the existing slabs and, with the addition of some new ones, we have been able to extend. There is still a bit more work needed to tidy up the area, but we hope that it will all be up and running soon and that we can have a grand opening event.

Hire Epwell Village Hall! We would like to remind everyone that the hall is always available for hire. Whether for parties, business seminars, or a new club – give us a try. We have simplified the way we charge rent – it was a little complicated before! The rates have had to go up slightly, all our costs have increased, but it is still good value for a great hall.

See table on page 7 for prices. Contact nicola.rudge@icloud.com to book.

Fully equipped kitchen.

Range cooker.

Large screen smart television for films or presentations.

Capacity – 80 standing, 60 seated.

Upcoming events.

Bacon Butty Breakfast. Cakes and Coffee, Saturday 14th June, 10am – 12 noon.

Epwell Village Hall AGM. Tuesday 24th June, 7.30pm.

Summer Wine Tasting. Saturday 19th July, 6pm. £18.00 per person.

Come and sample some delicious summer wines, maybe buy a bottle.

There will be snacks with each wine.

Please book by 14th July, to give us an idea of numbers, but late comers will be welcome

Contact Donna: donnalouise936@hotmail.com or WhatsApp on 07780602656.

Save the date!

EVH late summer event. Saturday 13th September– Stalls, BBQ, music by Pete Watkins and fun!

KEEP A LOOK OUT FOR FLYERS, POSTERS, AND NOTICES ON THE EPWELL EXCHANGE FOR UP-AND-COMING EVH EVENTS.

ST. ANNE'S CHURCH NOTES

Epwell and Wykeham Benefice services for June and July 2025

June

Sunday 1st	10.30am	Benefice service at Tadmarton
Sunday 8th	9.45am	Holy Communion
Sunday 15th	10.00am	Family Service for Father's Day
Sunday 22nd	9.45am	Holy Communion
Sunday 29th	9.45am	Holy Communion

July

Sunday 6th	10.30am	Benefice service at Broughton
Sunday 13th	10.30am	Family service
Sunday 20th	9.45am	Holy Communion
Sunday 27th	9.45am	Holy Communion

August

Sunday 3rd	10.30am	Benefice service at Epwell
------------	---------	-----------------------------------

In addition to Sunday services, Morning prayers take place on Mondays 9 - 10.30am in the beautiful side chapel. Please check in the weekly pewsheets in the church, or on the notice board at the church gate, for up to date news on all services.

VE80

It was lovely to see so many attend the VE80 celebratory service in May on such a sunny, peaceful Sunday morning in Epwell. We were all reminded how fortunate we are to live freely in this beautiful village and thank you to all those who attended and contributed, in making this a memorable occasion.

Father's Day

The Father's Day service this year is on Sunday 15th June at 10.00am. Everyone is most welcome and there will be refreshments and bacon rolls after the service.

Annual Parochial Church Meeting

At the recent Annual meeting of the PCC, thanks were expressed to all those who have supported St Anne's in so many ways – with refreshments after the service, flower arrangements, grass cutting, help at fundraising events and maintenance work. The Annual Report and Accounts were presented and the Churchwardens, Alasdair and Carolyn, the Treasurer, Chris H and Secretary, Julie B all agreed to continue in their roles for another year.

EPWELL ANNUAL PARISH MEETING – 15th May 2025

These are notes only. For official reports, please see EPC board and village website.

This is the annual meeting for village organisations to give an update on their status and progress. All these groups are run by volunteers – without them Epwell would not be the wonderful village that it is. The meeting was open to everyone in the village to come and see how things are done. Sadly, not many took advantage of this opportunity.

The organisations were as follows:

Epwell Village Hall: Epwell Recreation Association: Epwell Garden Group: St Anne's Church: Epwell Trust: Epwell Echo: Epwell Archives: Epwell Coffee mornings.

Village Hall: EVH events are successful – thanks to everyone who supports us.

ERA: Currently looking for funding. Please support where you can.

EGG: This is being re started; so far 23 people have joined and more are welcome.

Church: Everyone is welcome to any service. Funds are always needed for repairs and upkeep.

Epwell Trust: Supports Epwell in many ways. Offers personal assistance in utmost confidence.

Epwell Echo: Still going strong with new editors. Copy always welcomed.

Archives: Always available for viewing. New photos and articles gratefully received.

Coffee Am: Run by Allison Pollard for the last 3 years. She has now decided to step down many thanks for her hard work. A new team has taken over to ensure their continuation.

Epwell Village Hall Hire Charges 2025

For hire of the Hall, Kitchen and Facilities:

Events, parties, per hour:

Epwell residents	£8.00
Non-residents	£10.00

Business, per hour:

Epwell residents	£10.00
Non-residents	£12.00

There will be a small charge for setting up.

Access to hall for use of toilets for weddings etc can be agreed. All damage to hall, fixtures, fittings or equipment must be paid for. Loan of Hall Equipment - Epwell residents only. Small charge.

Contact nicola.rudge@icloud.com to book.

Your advert here?

If you'd like to advertise in the Echo contact Peter Koch de Gooreyndi
peter.kdeg@zen.co.uk



Visiting Podiatrist / Chiropodist

Julia Edwards D.Pod. M. M.Ch. S. S. R.Ch.

State Registered



Special rate £40/visit

Chipping Norton - Sibford - Hook Norton

Call 07854 968377 to arrange a home visit



Humphris funerals

Serving your family

**Complete Traditional, Contemporary, Preplanned Funeral
Service and Monumental Masons.**

We offer help, guidance and support when you have lost a loved one, making sure you say goodbye the way they would want. Humphris Funerals has been proudly serving the people of Banbury, Oxfordshire and surrounding areas as funeral directors since 1880.

01295 265 424

32 Albert Street, Banbury, OX16 5DG

www.humphrisfunerals.co.uk



D&D Enterprises



DAVE & DAUGHTERS
PAINTING & DECORATING

TEL: 07734 679 251



For all your local Painting &
Decorating Services

Internal & External
Domestic & Commercial
Fully Insured
Free, No Obligation Quote

www.danddenterprises.co.uk
dave@danddenterprises.co.uk

BACK PAIN, SPORTS INJURY & HEADACHE CLINIC

Especially for long term pain & problems

www.hectorwells.co.uk

Hector Wells BSc (Hons). DO.

*University Clinical Osteopath Tutor for 15
years*

Laura Humphreys & Carol Maria Caiado
Osteopaths

- Back, Neck Sciatica, Frozen Shoulder
 - Knees & Hips, Pregnancy Backs
 - Baby Sleep / Colic Clinic
 - Recurrent Headaches, Migraine
 - Mental Wellbeing Clinic (also postnatal)
- To avoid disrobing please wear leggings/
joggers & a T-shirt*

Appointments (01295) 265267
e-mail hector.wells@btconnect.com
**54 Bloxham Road, Banbury, Oxon OX16
9JR.**

Established 1991 (over 10,000 registered
Clients).

There's plenty to do in Banbury...

the light
CAST WATER PLAY

**Banbury
Museum
& Gallery**


**TOOLEY'S
BOATYARD
TRUST**

The Mill
ARTS CENTRE / BANBURY



Scan the QR code with your smart phone camera
to visit these websites

Advert produced by Banbury Quays Consortium CIC



POTHOLE!

Please continue to report potholes and road
problems

www.fixmystreet.com

You can also go on: <https://www.cherwell.gov.uk/report> to report a number
of things, including footpaths, faulty street lights, fly tipping etc.



Epwell Trust

The Epwell Trust administers 11.4 acres of land which is rented out in two agricultural tenancies. The rental from the tenancies provides monies to be used, should help be necessary for Epwell and its residents.

If anyone knows of a situation where help for a resident may be needed, then please contact any member of the Trust listed below. All conversations will be held in the strictest confidence.

<u>The Trustees are: -</u>	<u>Telephone Numbers</u>
Stephen Rutledge – Chairman	07919 693401
Suzanne Kaye – Clerk	
Nigel Prickett – Vice Chairman	07967 688926
Conway Freeman	07831 484541
Norman White	01295 788155
Liz Baker	
Matthew Platt	01295 780942
Brian Tustian	

Team EVH:

Chair	Nadira Thain	nadirathain@outlook.com
Vice Chair	Alex Tait	Alextait164@hotmail.com
Treasurer	Vic Tofts	victofts@btopenworld.com
Secretary	Nicola Rudge	nicola.rudge@icloud.com
Bookings	as above	nicola.rudge@icloud.com
Julie Bruggenwirth, Suzanne Kaye, Bernadette Jeavons, Lottie Gibson, Donna Boyles		

Epwell Parish Councillors:

Matthew Platt (Chair)	cllr.matthewplatt(@epwell.com (T. 780942)
Toby Brook	cllr.tobybrook@epwell.com
Peter Gibson	cllr.petergibson@epwell.com (M. 07811 164583)
Nicola Rudge	cllr.nicolarudge@epwell.com (T. 780508)
Norman White	cllr.normanwhite@epwell.com (T. 788155 M. 07743 841471)
Christine Coles (Clerk)	epwellparishclerk@epwell.com

The Village Website <https://epwell.com/>

The village website has been completely revised, with a home page for news plus a feed from the Village Facebook page, later sections on village organisations and activities, a diary of local events, a section on parish council matters, useful information on services and businesses, an on line version of the Epwell Echo and a history of the village.

Do have a look and if you wish send comments and suggestions by email to editor@epwell.com

Epwell Village Assistance - EVA

Set up to help out where needed. If you need help, please contact any member of the parish council.

If you would like to offer help, please contact:

Gavin Lloyd Thomas gavinlthomas.glt@gmail.com 01295 788771



Village Hall tea events



May 2025

Sibford Gower Endowed Primary School Report

June 2025 by Andrea Rutledge

We seem to be racing through the summer term. Year 6 SATs are over and we have all sorts of exciting things planned for the rest of the school year. Our P.T.A are planning a special Summer Fair as part of our 400th birthday celebrations, rehearsals are underway for our KS2 summer performance of The Wizard of Oz, Beech Class are preparing for their educational outing to the Didcot Railway Centre, and we are starting to plan ahead to Sports Day and other end of year events.

The children in years 3, 4 and 5 recently spent a truly wonderful morning at the Sculpture at Kingham Lodge Exhibition, exploring all manner of sculptures and enjoying the surroundings. This is a biennial event and we would highly recommend a visit in 2027!

As this is the last report of the academic year it is time to say goodbye to Harry Spann and Liam White as they move onto secondary school and we wish them all the best in their next adventure.

Have a wonderful summer everyone xx



**Pictures from the service of commemoration
of the 80th anniversary of VE Day at St.
Anne's Church on 11th May**



VE80 Commemoration at St. Anne's 11th May.

Greater love has no one than this: to lay down one's life for one's friends. John 15:13 NIV

It was lovely to see 23 Epwellians attend the VE80 commemoration service in May on such a sunny, peaceful Sunday morning in Epwell. We were all reminded how fortunate we are to live freely in this beautiful village. The sun shone, birds sang, peace was here and at one point of the service, one Epwellian freely strimmed their garden which reminded us of how life has calmly gone on for us who are honoured to have our freedom. Thank you to those who attended and contributed in making this a memorable occasion and to Matt Platt and Nicola Rudge from the PC who instigated the idea, Alasdair Lowe and Andrew McHugh who helped me to bring this short service together.

Carolyn Koch de Gooreynd

Those on the Epwell Exchange WhatsApp group were asked to contribute a line or two about what the sacrifice of those who sacrificed their lives for our freedom meant to them. These were the responses.

"The freedom I appreciate most is to live in a democratic society at peace with our international neighbours – long may it last."

"The freedom to live as I want to live and to make my own decisions. Without even ever thinking about how special that is because I just take it for granted."

"I value having my family and loved ones alive, thriving with the freedom to create their own futures. I appreciate, in fact am in awe of the mothers who lost their sons and bore it with such fortitude."

"The freedom I appreciate the most is having choices. To be able to choose where I want live, where I want to go to, whom I want to spend my time with in all peace of mind. I also appreciate the security of peace to bring up my family with love and without war, worry and conflict."

"The freedom I appreciate most is.. The freedom to fail, surely by far the most precious gift. Albeit within a quiet expectation to succeed most of the time, if an individual cannot dream, try, believe and then occasionally fall absolutely flat and still be tolerated by the rest of society, then all hope for human advancement is lost."

"The freedom I appreciate is the freedom to walk anywhere, on paths and tracks, in fields and in the street without fear of the ground exploding below me from unexploded ordinance; from France to Vietnam, Ukraine to Iraq, Afghanistan to the Balkans this remains a risk."

"The freedom I appreciate is being able to choose my faith and practice it freely."

"The freedom I appreciate is that my countrymen are allowed to express their views through creativity of art, music, poems and books largely without censorship, restrictions or threat to their lives in doing so."

"The freedom I appreciate the most is having choices. To be able to choose where I want to live, where I want to go to, whom I want to spend my time with in all peace of mind. I also appreciate the security of peace to bring up my family with love and without war, worry and conflict."

Book Reviews by Clare Lee

Geneva by Richard Armitage



An old fashioned thriller with people being chased through the snow by the armed baddie – but who is the baddie? - and a modernist residence and laboratory built out to get the best views and containing astonishing tech. Except this is bang up to date with a professor convinced that she has all the symptoms of early onset dementia and a teeny tiny brain implant that might hold the cure. Except nothing is as it seems – in the best traditions of a thriller! Is the Russian selling his secrets? Is it the faithful, attentive and kind husband, the glamorous American or the guy in the wheelchair? As the secrets multiply our heroine has to unpick the threads and finally come to the only possible conclusion, trust no-one except yourself, but can she trust herself?

My Favourite Mistake by Marian Keyes



Four sisters with very different lives and an Irish mother, interested in everything and holding them together despite the distances. Anna has a life to envy, an apartment in New York, a high-flying job in beauty PR and a partner who is trying to understand. She is also in the middle of the menopause and feels she may have wasted her life. She switches the skyscrapers of Manhattan for the tiny Irish town of Maumtully to help out old friends, Brigit and Colm, set up a luxury coastal retreat. The locals seem to hate the idea, there have been threats – and violence. Old not quite flame Joey Armstrong comes back into the picture – one of her many mistakes. Keyes remains one of the best writers, involving and entertaining.

Blue Sisters by Coco Mellors



Four sisters blown apart by trying to escape a disinterested mother or perhaps by trying to interest her? They have always been exceptional. Avery, a strait-laced lawyer living in London, is the eldest, though she's hiding a secret that could undo her perfect life. Bonnie was a boxer but, following a devastating defeat, she's been working as a bouncer in LA – until a reckless act drives her out of the city. Lucky, the rebellious youngest, is a model in Paris whose hard-partying ways are finally catching up with her. Then there was Nicky, the beloved fourth sister, whose unexpected death left them reeling. A year later, the three of them reunite to stop the sale of their childhood home. In returning to each other they navigate their grief, addiction and heartbreak and perhaps, learn to fall in love with life again.

HONEYCOMB WORD PUZZLE SET BY ADRIENNE PLATT

The Epwell Honey Honeycomb Word Puzzle



How to Play

Create words using letters from the honeycomb.
Words must include the center letter.
Words must contain at least 4 letters.
Letters can be used more than once.
No words that are obscure, profane, hyphenated, or proper nouns.

How to Calculate Your Score

The number of letters in the word corresponds to the score.
Words using all letters get a bonus of +5 points.



The entry with the highest score will win a jar of Epwell Honey.

Send your word list in plain text format to honey@epwellhoney.com

Winner will be announced in the next edition of the Epwell Echo.

We have a winner!

The winner of the March Epwell Echo Honeycomb Word Puzzle was Julie Bruggenwirth with an amazing list of 124 valid words. Apart from finding many of the common four- and five-letter words, Julie managed to find over 60 six- seven- and eight-letter words. She even achieved the holy grail of finding a word that contains all seven letters. Congratulations Julie and enjoy your sweet success.

MONTHLY COFFEE MORNINGS IN THE VILLAGE HALL

Ever since Covid restriction Allison Pollard has been kindly organising and managing the monthly Epwell Coffee Mornings in our Village Hall. As we tiptoed out of lockdown slightly scared of crowds, confined spaces and anyone not wearing a mask, there was Allison ready to rebuild our faith in the outside world again with coffee, tea and scrumptious cakes, scones and biscuits. It wasn't until the May Epwell Coffee Mornings that I realised what a task Allison had been organising and managing over the past few years. Getting the tables ready with tablecloths, setting up the plates and cups, picking the flowers for the tables, bringing the vases for the flowers, buying the coffee, tea, milk and sugar. Baking the evening before and then being overwhelmed by the incredible selection of cakes supplied by our lovely ladies of Epwell, thank you to Suzanne, Jill, Allison, Mary, Nicola and Adrienne. Although I thought I had covered everything and sat in the Village Hall waiting for 10.30 to start making tea and coffee, I had actually forgotten the bring a float for change and in walked Allison with a float I could use. Phewie! I had my coffee morning guardian angel looking after me. So it is the very biggest of Thank You's to Allison for starting our Epwell Coffee Mornings.



Thank you also for all the help from everyone pouring teas, coffees and washing up afterward especially to Adrienne. All the money made selling cakes and drinks goes to different charities each month. The cost of tea and cakes are what ever donation you would like to put in the pot. So next month I am suggesting that not only do we have coffee tea and yummy treats but we also bring any surplus plants and produce to sell for charity as well, again just a donation. Second Wednesday of the month, every month. We hope to see you then. Marie and Adrienne.

EPWELL ARCHIVES

The Epwell Archives are stored in 2 fireproof cabinets donated by the Epwell Trust and Epwell Parish Council.

Over the last 30+ years Eric Kaye and Peter Neal have been custodians of the Archives which have been sorted into files and boxes so that whatever subject is required for exhibitions or display can be easily found. This consolidation of the Archives was achieved with the help of Brian Woolsey, Tony Lee and Christian LeJeune who gave their time on many occasions.

My father Eric and Peter have now retired from their custodianship, so I would like to thank both of them for their dedication to the Archives and events organised over many years.

Being born and brought up in Epwell, I had no hesitation in taking over the custodianship of the Village Archives.

If anyone would like to join me in being a custodian of the Epwell Archives then please let me know.

The Archives are available for anyone to look at, just get in contact with me and a time can be arranged to see whatever is required.

Suzanne Kaye (Corner House)

Father's Day

Breakfast & Service

Sunday, 15th June

St. Anne's Church

***Breakfast* at 9.40a.m.**

***Service* at 10.00a.m.**

See you there!



Epwell Gardening Group

Christian Lejeune

Egg was re-launched beginning April 25 and we are very pleased to announce that to date we have already 24 paid up members and a few more in the pipeline.

We have already held 2 of our monthly meetings and had the pleasure to benefit from two brilliant presentations. The first one by Alasdair Lowe on the effect of legislation on the environment and farmers. The second by Peter Koch de Gooreynd who, supported by photos and video, gave us a good idea about lavender and his business. Our grateful thanks to both for their interesting talks.

By the time you read this, we shall have had our first walk along local footpaths and stop at a pub.

Our next meeting, on the 14th of June 25, will consist in a visit of a few members' gardens and a bring your own picnic at Marie's lawn. Thanks very much to Marie for all her help. If you would like to join us please enlist in the club.

We are also working on a few trips and visits, both remote and local. At the moment, we are looking at transport logistics which Adrienne has kindly agreed to take care of.

We have already started a group interested in learning basic languages mainly for holiday purposes. There are 6 of us so far doing Italian. Anybody interested in languages please let us know.

We would like to hear from you about your hobbies and interest and contribution you could make to EGG.

We are also ready to cooperate with other organisations to organise events etc

One can join EGG at any time and it costs £10 per person (15£ for a couple) per calendar year.

We are looking forward to seeing some of you joining us.

RADWAY EQUESTRIAN

BHS approved riding school situated outside the village of Epwell, offering riding lessons for all ages and abilities, from beginner to advanced rider. A purpose built yard with indoor arena, well-schooled horses and a team of professional coaches



tel: 01295 670265 email: radwayequestrian@gmail.com



JAKE ALEXANDER GILL

ARTIST BLACKSMITH

WWW.JAGBLACKSMITH.COM

JAGBLACKSMITH@GMAIL.COM



[JAKEAGILL.BLACKSMITH](https://www.instagram.com/jakeagill_blacksmith)



[JAKE ALEXANDER GILL BLACKSMITH](https://www.facebook.com/jakealexander.gill.blacksmith)

**Beautiful Handmade Creations
In The Heart Of The UK**

Chris Smith

Your local handyman



**No job too small
Please give me a call!**

Phone - 01608 737145

Mobile - 07703 202922



Generations of Care

R. Locke & Son

Independent Family Funeral Directors – Est 1853

Caution Corner
BRAILES
OX15 5AZ
t: (01608) 685274

Southam Street
KINETON
CV35 0JN
t: (01926) 640386

No. 6 The Precinct
WELLESBOURNE
CV35 9NL
t: (01789) 840744

New office opening in
Shipston on Stour



FUNERAL PLANS FROM
Golden Charter
Smart Planning For Later Life

For more information about our services,
to view our funeral announcements and
online donations, please visit

www.rlockeandson.co.uk

Please call for a funeral planning brochure
or to arrange a no-obligation meeting.



Ray Randerson Carpets Est 1980

Excellent customer service and attention to detail

Visit our Phenomenal showroom

Estimate and measuring service

Evening and weekend appointments available

Samples to your home

SUPPLIER AND FITTERS OF FINE QUALITY CARPETS

Oxbow Farm, Avon Dassett, Warwickshire, CV47 2AQ.

(01295) 690721 07860472271

www.rayranderson.co.uk

sales@rayranderson.co.uk

BRUCE HOPKINS LTD



**Domestic & Commercial
Groundcare Machinery**



Sales, Service, Spare Parts



HONDA
The Power of Dreams



Shenington Airfield tel 01295 680711

www.brucehopkins.co.uk

 **Husqvarna**

HAYTER
MAKERS OF THE FINEST MOWERS



MOSSINATOR®
ROOF CLEANING SYSTEMS

**Moss Removal & Roof Cleaning
Brickwork Cleaning
Patio & Driveway Cleaning
Solar Panel & Skylight Cleaning
Installation of Bird Protection**

**Enhance the appearance of
your property with our
quality assured, friendly service**

**01865 362797
info@mossinator.co.uk**

**P H GOODMAN
& SON**

**CARPET & FLOORING
SPECIALISTS**

Qualified member of the National
Institute of Carpet and Floorlayers

**Saddledon House
Middle Tysoe
Warwickshire**

**Tel: 01295 680318 or 277326
goodmancarpets@gmail.com**

The Forge Garage (Brailes) Ltd

Telephone: 01608 685247

Email: enquiries@theforgegarage.co.uk



A family-run, community-focused garage since 1952, where excellence is at the centre of all we do. You'll be guaranteed a tailored service every time.

Quite simply, Forge Garage saves you time, money and stress.

Vehicles are everything we know. That's why we're able to keep every part of your car running at optimum – from an honest, reliable MOT to brakes to diagnostics to air conditioning. We're here to help so please contact us today on 01608 685247 if you have any questions about your vehicle, or for a free no-obligation quote.

We also have a pump attended fuel station selling unleaded, diesel and Autogas, as well as Calor gas, kindling, logs, coal, BBQ coal and firelighters.

<https://www.theforgegarage.co.uk/>

R Wakelin Heating Services Ltd

31 The Dairyground, Shutford, Oxon OX15 6PN
Tel: 01295 788359 mobile: 07810 754434
email: ross@wakelinheatingservices.co.uk

Boiler Servicing/Repairs/Replacements

Gas and oil

Domestic—Commercial

Gas safe registered 190421

Oftec registered C6644



CHANDLERS ARMS

EPWELL

Opening Hours:

Monday: Closed

Tuesday: Closed

Wednesday: 18.00-23.00

Thursday: 12.00—14.00.....18.00-23.00

Friday: 12.00-14.00.....18.00-23.00

Saturday: 12.00-14.00.....18.00-23.00

Sunday: Closed

For any enquiries, feel free to contact us on 01865 347047

or email info@thechandlersarms.co.uk



cotswold secure storage
.co.uk



Self-Store Container Storage in a secure rural location

24-Hour Access

Short or Long-Term storage available @ £100+vat p/m

Lifting and offloading assistance available

For information or to book please contact Chris on:

email: chris@costwoldsecurestorage.co.uk

Phone: 07599 684487

OPUS

OPUS

Property Services Ltd

Bathroom & Kitchen Design

and Installation

From minor alterations to full refurbishment we can transform your bathroom or kitchen into an inspirational space. We offer a complete service from the first sack of rubbish out to the final polish.

Call Alan or Catherine on 01295 780652 or 07816 592124

Visit: www.opusps.co.uk

for photo gallery and to learn more about us.



MILCOMBE, BANBURY

FOR ALL YOUR DOMESTIC PLUMBING

FULLY QUALIFIED ENGINEER

T: 01295 368150 M: 0742 5982855

E-mail: info@pltplumbing.co.uk



RED HORSE VALE LTD

All types of fuel
Coal, Smokeless, Gas,
Logs, Kindling,
Central Heating Oil,
Oil Tanks and Coal Bunkers,
Building Materials,
Garden Sheds,
Garden Centre and Garden Supplies,
Farm and Country Sundries,
Equestrian Products, Horse and Pet Feeds.

Windmill Farm, Banbury Road (A422),
Oxhill, Warwickshire CV35 0RL
01926 642832

TONY ALLEN



**For Quality
Workmanship**

Painter & Decorator

Interior and Exterior

Paper Hanging – Glazed Tiling
Sponging etc.

Coving and Dado Rails
supplied and fitted

Qualified Tradesman

FREE ESTIMATES

For a Professional and Reliable Service

Telephone Banbury

01295 264754

Mobile: 07976 279939

THE VILLAGE SHOP

HOOK NORTON

tel: 01608 737245

NATIONAL LOTTERY

Grocery - Greengrocery

Wines - Spirits - Confectionery

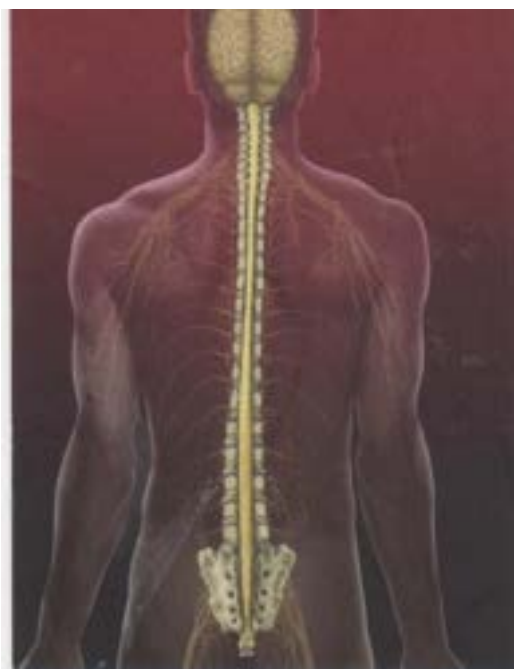
Newspapers - Magazines - Cards

.....

OPENING HOURS

Monday – Saturday
8am – 8pm

Sunday
9am - 4pm



Sheila Hoy

CranioSacral Therapist

College Barn Back Lane
Epwell

Oxfordshire OX15 6LF

Tel: **01295 780027**

Email: sheilaji@hotmail.co.uk

www.upledger.co.uk

The Heritage Fruit Tree Co



"Fruit with Flavour"
01295 810516

Orchard design, site
visits and maintenance

Supplying heritage &
local varieties

Training courses in all aspects of
Orchard management

As featured on local TV and radio

Pruning • Grafting • Saving old trees

heritagefruittrees@icloud.com

www.heritagefruittrees.co.uk



The Septic Tank Store

FAMILY RUN BUSINESS WITH OVER
30 YEARS OF EXPERIENCE

Sewage Treatment Plant installation

Irrigation and waterpipe works

Rain harvesting

Drainage projects

Outdoor electrical works

Ditch clearance and field drainage



Contact us for friendly advice

www.theseptictankstore.co.uk

T: 01295 236101 E: sales@theseptictankstore.co.uk

MISS "T" CATERING

CATERING FOR EVENTS SUCH AS
ANNIVERSARIES, WEDDINGS,
CHRISTENINGS,
BIRTHDAY PARTIES,
FUNERALS AND
PRIVATE DINNER
PARTIES.

ALSO AVAILABLE:

CUTLERY AND CROCKERY HIRE

CONTACT VICTORIA TAYLOR ON

MOBILE 07841 910037

HOME 01295 780206



BESPOKE DESIGN SERVICE FOR
CUSTOM MADE FURNISHING

Pattern book room for you
to browse Fabric designs

Curtains, Blinds & Cushions

Loose covers & Lampsshade making

Headboards & bedspreads

Curtain poles & tracks

New Sofas & chairs & reupholstery

01295 788145
ann@annwoolgrove.com
www.annwoolgrove.com
www.yarnhill.co.uk



TYSOE VILLAGE STORES



Everyday essentials and not so essentials!

Fruit and Vegetables, Cacklebean Eggs from Stowe

Fresh Meat by Barry The Butcher of Stratford



Chilled Beers, Local Ales, Wine and Spirits

Gluten free and vegetarian ranges



Home Delivery Available Wednesday - Friday

Shop Open: Monday to Saturday 8.30-19.00; Sunday 9.30-17.00



TEA ROOM



Delicious locally roasted coffee, fresh sandwiches and cakes

Tea Room Open: Wednesday to Saturday 9.00-15.00

31 Main S, Middle Tysoe, CV35 0SE

01295 688333: email: mytysoeshop@gmail.com

///jumbo.punchy.typed

Epwell Exchange: The Village WhatsApp Group
Don't forget to add yourself to the village WhatsApp group
(108 villagers and counting are already there!)



Download WhatsApp and scan this QR code!

Alternative joining instructions: Once WhatsApp has been downloaded, send a message to Gavin Lloyd-Thomas (07711 576554) or Toby Brook (07939 459837) with your name, requesting to join.

BINS

JUNE (TUE): 3rd Green | 10th Brown/Blue | 17th Green | 24th Brown/Blue

JULY (TUE): 1st Green | 8th Brown/Blue | 15th Green | 22th Brown/Blue | 29th Green

For further information check village website, www.epwell.com and village hall notice board

Tysoe Post Office Opening Times

09.00—14.00 Monday to Friday

09.00—12.30 Saturday

Royal Mail Collections from The Square

9 am on Monday to Friday and 7.00am on Saturday

There is a collection at 4pm or later from the post box in Tysoe.

EDITOR AND PRODUCTION:

Marie Woodward and Caroline Frost | Email: epwellecho@gmail.com

TREASURER AND ADVERTISING:

Peter Koch de Gooreynd | Tel: 01295 780312 | Email: peter.kdeg@zen.co.uk

PUBLISHING:

Caroline Frost and Francesco Totta | Email: epwellecho@gmail.com

DISTRIBUTION:

Nicola Rudge and Christian Lejeune

DEADLINE FOR NEXT ISSUE 25TH JULY

ADVERTS:

Quarter page £3 | Half page £6 | Full page b/w £12 | Full page colour £18